

Naucoria

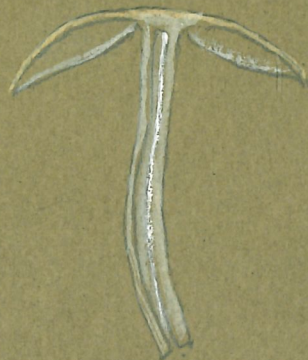
Subg. Galemla

" Naucoropsis

" Tubaria

" Flamula

749



Galeria revida
auf einem Blumenkürbel
28. VII 87

= *Nauconia*

517

750



Galera rorida
Morgins 14 1 x 94

= *Nauconia* n. (Fr.) Henn.

517

757.



Galera mycenopsis
Dresdenberg 24 IX 97
= *Nauconia m.*

517

752



$\frac{8}{4\mu}$



(Nauconopsis)
Nauconia cincticulus
Brangartenwald 7 x 93

525

753



Tubaria staguina
auf einem Blumenbock
29 x 195

526

754



oo $\frac{3M}{6M}$



Tubaria paludosa
Forêt de Margius 2. IX 89

527



•• $\frac{4,5}{7m}$



Flammula Stuberiana
Epfischthal 19. IX 68.

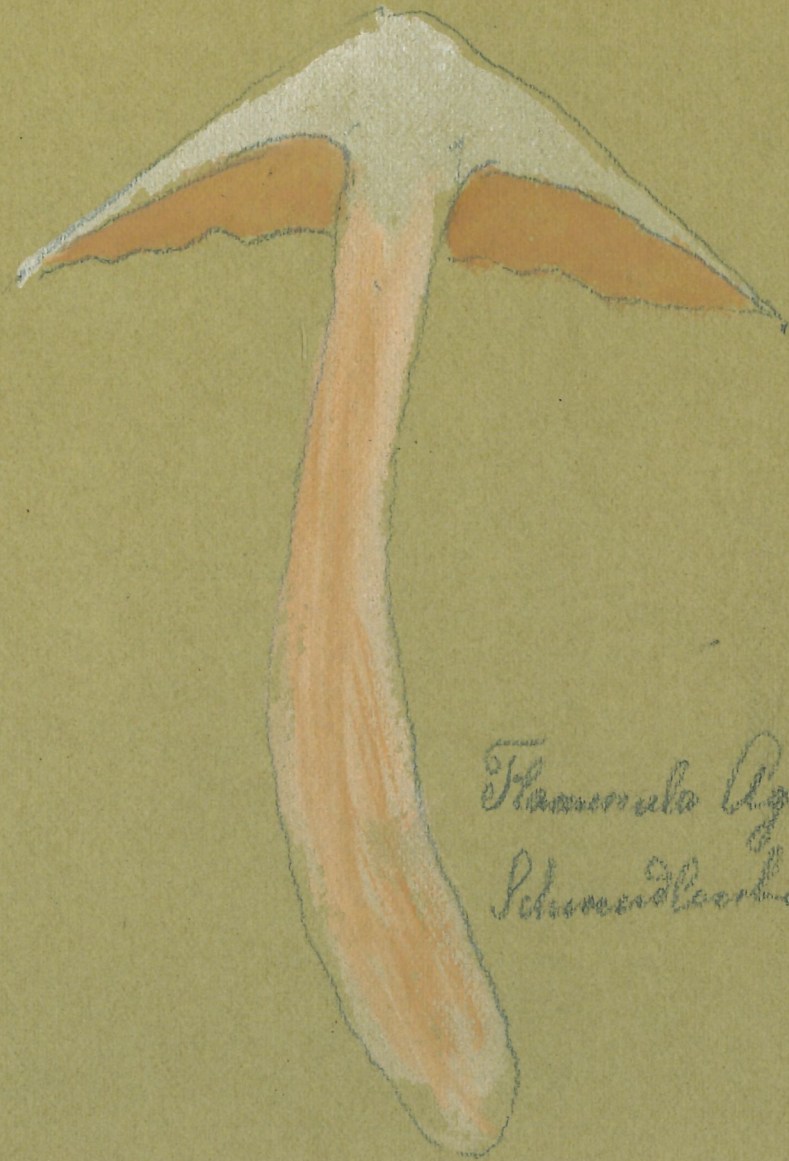
Flammula

527 *Flammula Stuberiana*. Fayot.

756



528



Flammula Agardhii
Schwedenland 21 IX 99

757



Flammula Liquiritiae
Burgarten 6. VIII 88

528



Flammula hybridum junq

7. x 87

An einer Bretterwand

= *W. hybrida* (Bull.) Schaetk

759



Flammula fusa
Himli 30. VII 90

= ~~*Maucoia pygmaea*~~

760

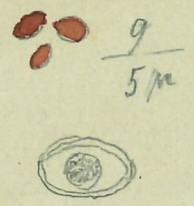


Flammula fusca

Morgins 30. 8. 89

= ~~*Nauconia mylinda* (Bull.)~~
Sistruct.

529



$\frac{9}{5\mu}$



Flammula fusa
Bremgarten 22. x 95

~~*Nauconia hybrida* (Bull.) Holmst~~

762



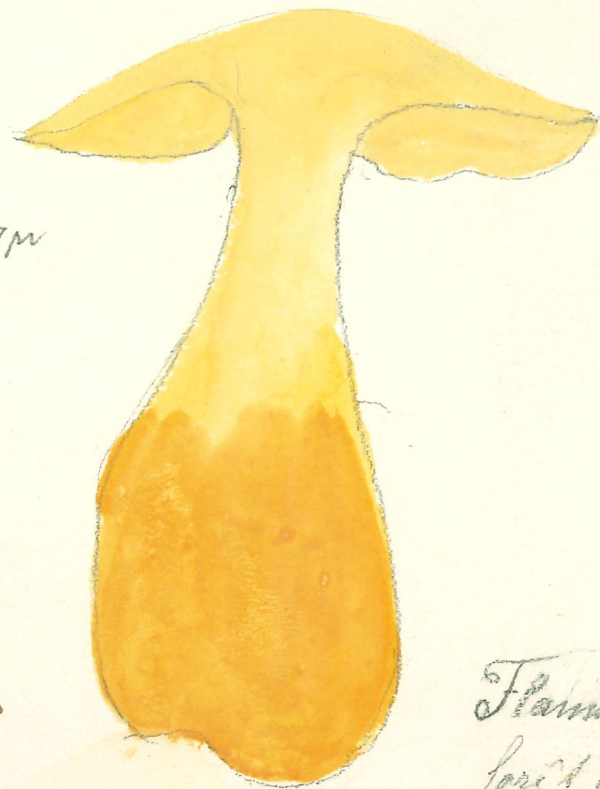
Flammula sepiacea
Morgins. 2. IX 89

529

76B



•• 7m



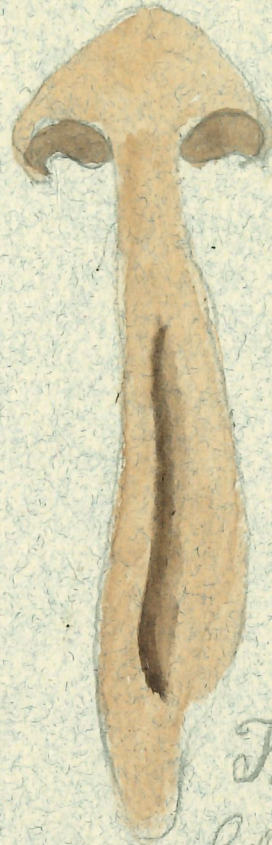
Flammula sapinea
forêt de l'Espe. 11. 8

Flammula sapinea

90

529

763a




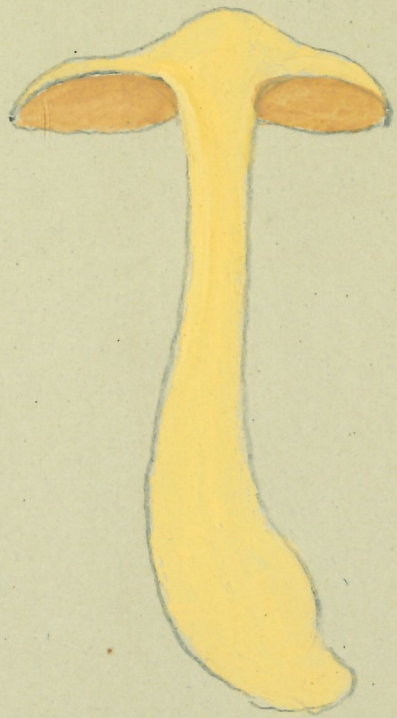
Flammula sapinea
Schäfersberg 20. IX 1

529

764




 $\frac{5\mu}{8\mu}$



Flammula sapinea var. *terrestris*.

Morgins 25. 8. 89.

529

765



9 μ
14 μ



Flammula picea
Garten bei Bonn γ. x 85.

530

766



Flammula penetrans
Königsberg 22. IX 0

530

767



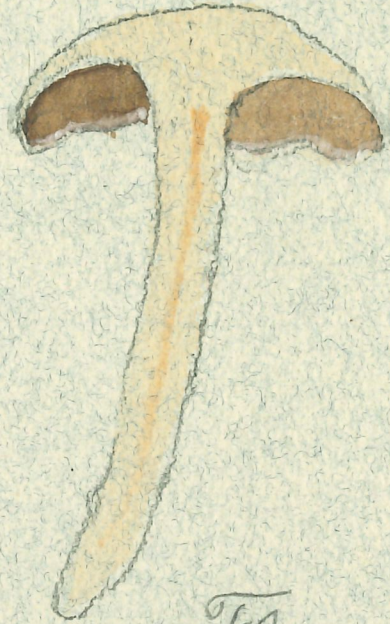
$\frac{4}{9\mu}$



Flammula astragalina
Martigny 14. IX 91 P.

531

Flob



Flammula alnicola

Längeby 9 IX 1

= *Nauvoria amara* (Bull.) Schred

531

769

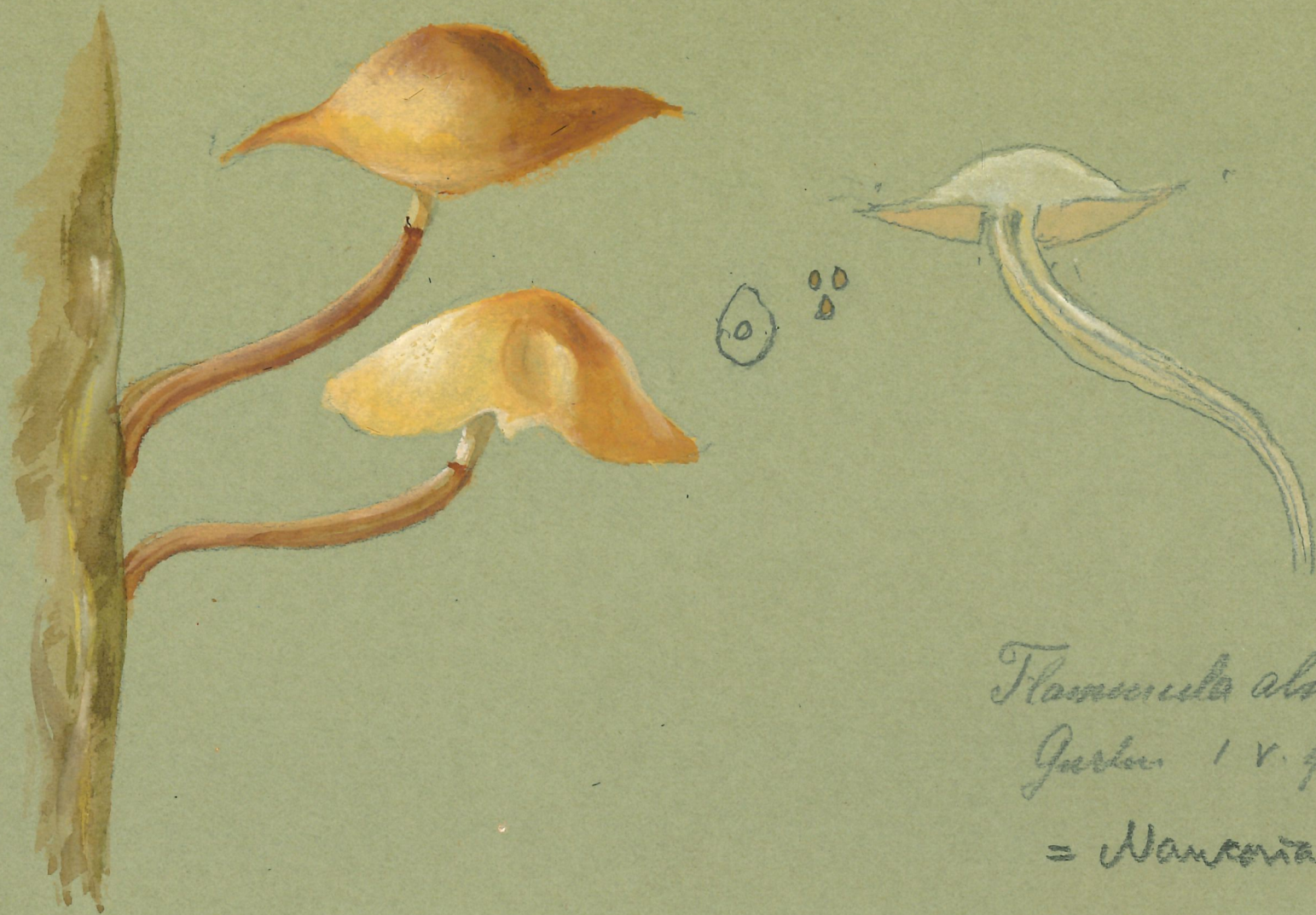


Flammula albicoma
auf *Sambucus nigra*
16. IX 97

= *Nauconia amara*

531

770



Flammula alpicola

Garten 1 v. 98

= *Nanocoria amara*

531

771



5/8



Flammula abieticola ?
Bois de Serris près Clichy
5. IX 87

= *Naucaia amara*

531

772



$\frac{c}{3\mu}$



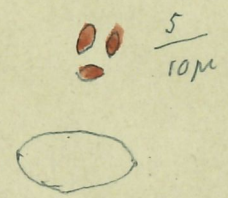
Flammula flavida
an einer Bretterwand im Treibhaus

27 XI 95

= *Nauvoria flavida*

531

773



Hemmisphaera rubrica
Königsberg 20 x 95



532

774



532

Flammula carbonaria
Morgens 16. 8. 90

775.



$\frac{1\mu}{5\mu}$

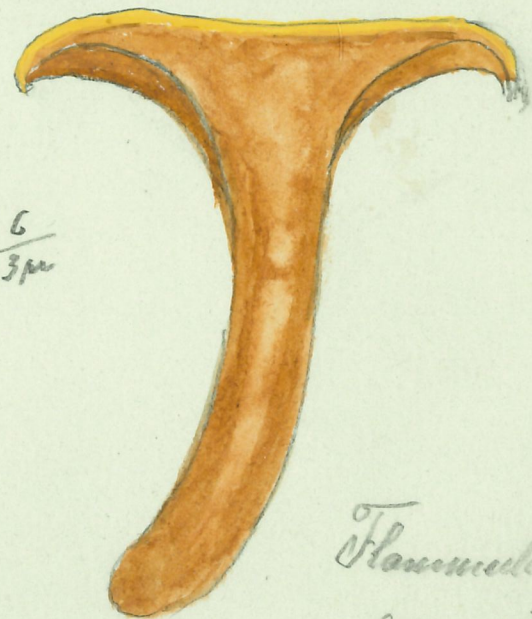
Flammula paradoxa
Champex 5. IX 94

533

776



$\frac{6}{3\mu}$



Flammula paradoxa
Sangueliger 8. IX 95

533

777



Flammula gyrovagoria
Längenberg 9. IX 1.

534

778

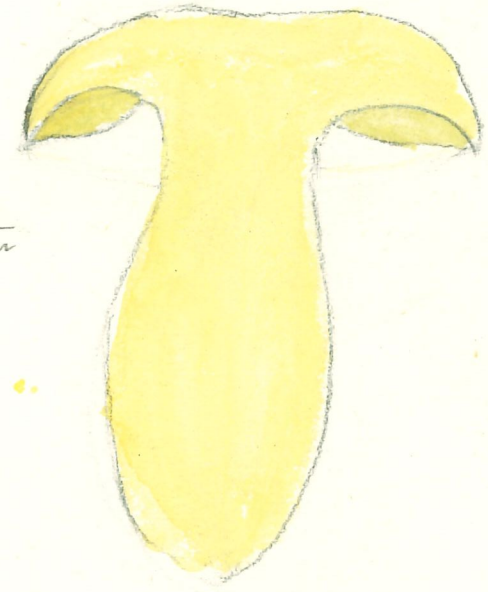


Flammula abrupta
Pers. H. IX 88

Flammula abrupta, Fr. Ic. Hymen. t. 115 fig. 1.



$\frac{4}{10\mu}$



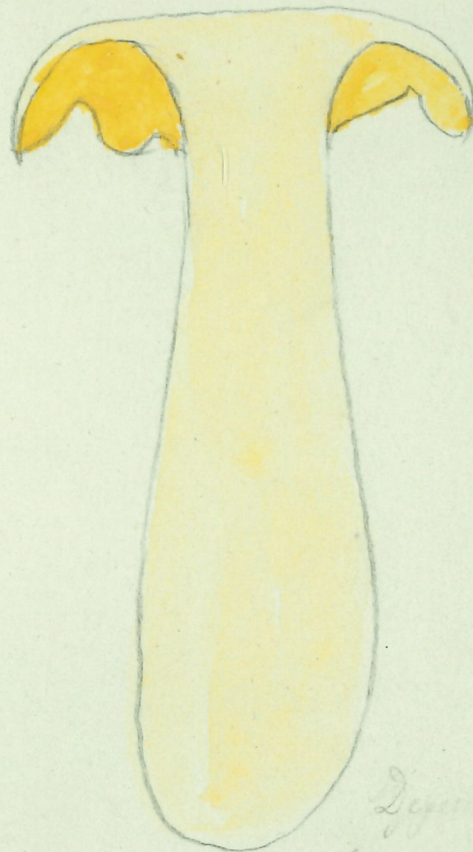
Flammula abrupta Fr.

Flammula abrupta Fr.
Bismuthal 1460 m. N
6. IX 88
in Tannenwald. filobrig
Vehu seidig, gelb,
schwindend

Uppsala
780



88 7m



Dyngsare allanor 579
forêt de Chandolin 4. IX 90

Flammula abrupta. Fr. Icon. select. pl. 115 fig. 1. (typica!)

Le *Dermocystis Orellana*, se le post su *D. fucatoxylla*,
et appartient au groupe du *D. cinnamomea*.

187



Flammula helvellaoides

Königsberg 23. IX. 1

Tholiota

~~Page~~

782



6 μ
4 μ



Pholiota mutabilis
Büttenberg 9. IX. 86

537

783



Berchou



$\frac{5\mu}{8\mu}$
 5 μ
 8 μ

Pholiota mutabilis
 Toferswald bei Tschugg
 29. VIII. 87

537

784.



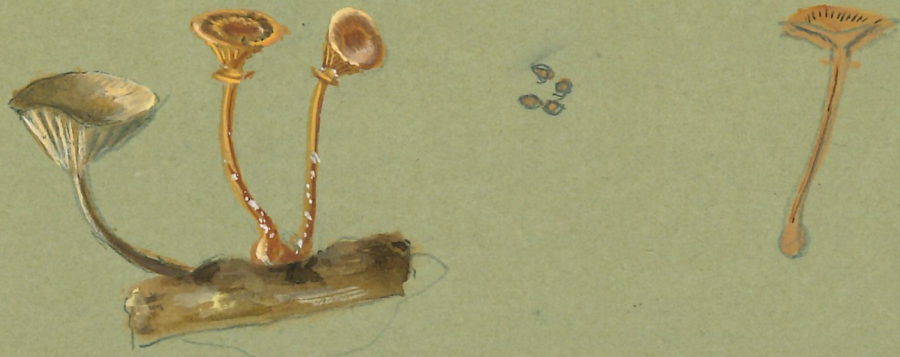
00 $\frac{3,75}{7,5\mu}$



Tholiota unicolor
Brenngartenwald 28. IX 92

538

785



Pholida marginata
25. V. 99
an alten Tannwäldz

538

786



Tholiota flavumans
Langensywald 2. IX 07

538

787



$\frac{5}{8\mu}$



Pholiota flavissima

Guatemala 18 IX 97

= *Ph. Flamula*?

538

788



4,5 μ
10 μ

Pholiota tuberculosa

Jurassic Treibhaus

9. V. 89

539

789



3/6 pu



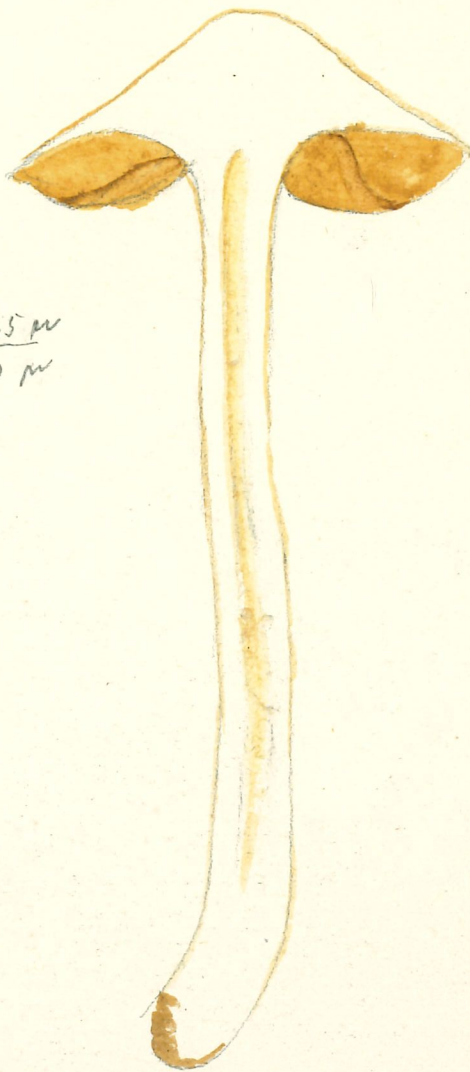
Pholiotte adiposa
Nepleskuvale 19. IX. 03

560

790



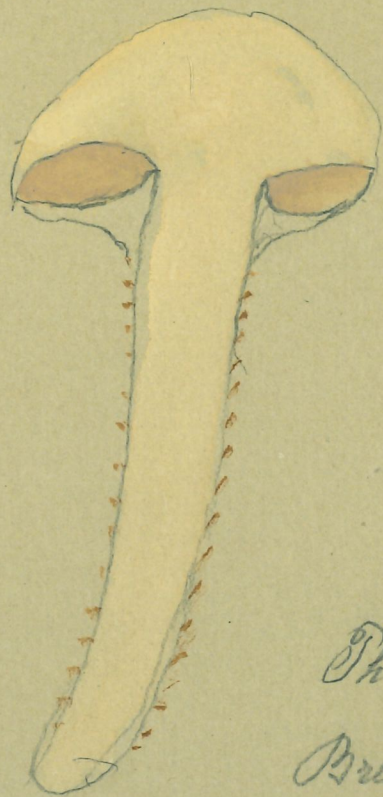
$\frac{4.5 \text{ m}}{10 \text{ m}}$



Pholiota subquarrosa
Dählhölzli 22. IX 85.

540

79i



Pholiota subquarrosa
Bracongarten 22. IX 89.

540



Tholiota *uvellus*
 Bremgarten 1895

540

510

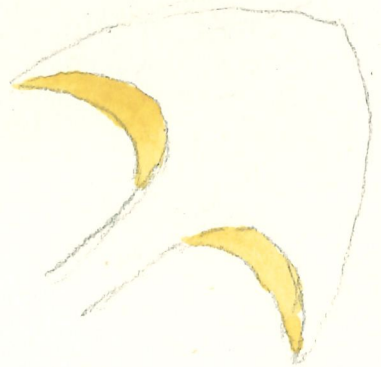


25-IX 84

Pholiota aurivellus

ebt

546



25 IX 84

Pholiota aurivellus

794



$\frac{9\mu}{4,5\mu}$
 •••

Pholiota squarrosa
 Garten 3. X. 85

5m



Sholista radicata

Quarter 22 IX 97

512

796

797



5 μ
8 μ

Pholiota dura
Garten bei Bern
30. v. 87

543

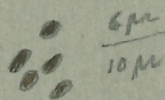
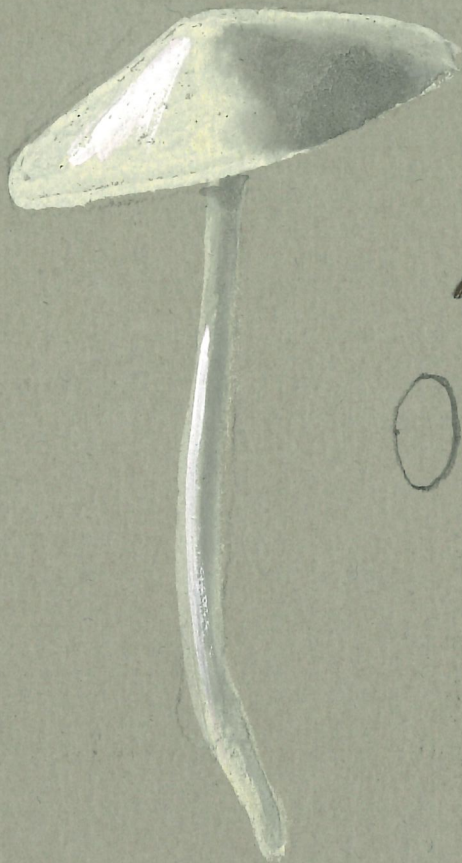
798



Pholiota vera
24. VII 84

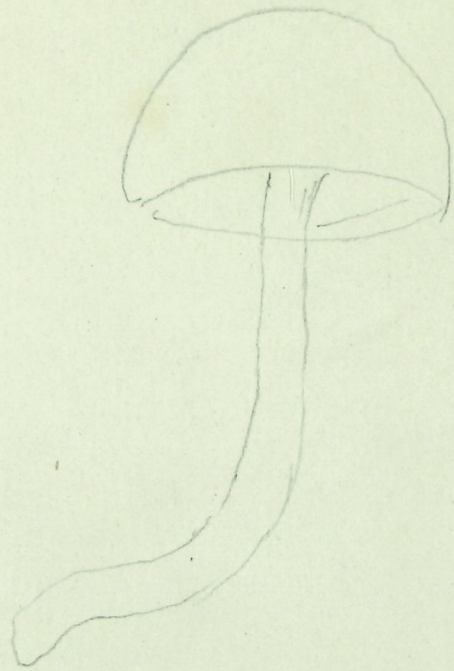
543

799



Pholiota praecox
Garten bei Berlin
10. VI. 86
= *Ph. candidans* (Schaeff)

5hh



Tholiota speculorumorph. ?
 Gaster bei Bern Juni 91

5hh

801



00 $\frac{12 \mu}{4 \mu}$
00



Pholiota aurea

Quarter

11. IX. 87

545



Pholiota Secretani
Turkuental 8. IX 93

803



$\frac{10}{5\mu}$



Pholiota togularis

Bas. 18. x 93.

546



0 $\frac{2}{4}$



Pholiota terrigena
Neslerwald 24. IX 96

546

Rozites.

~~Dr. J. J. ...~~
~~...~~



Thaliota caperata
Seligrobus 4.1x.07

517 = Rozto c.

805

806



Pholiota caperata
Schiffen 24 VIII 95
= *Rozita caperata*

807.



☼ $\frac{12\text{ M}}{5\text{ M}}$



Pholiota caperata
Brenngartenwald
22. IX 87.

= *Rozita caperata*

Hypporhodius

Subg. Cleudaym.

Subg. Eccilia

Volanea

"

Septoria Endoloma

"

Chytalus.

"

Plutus

~~536~~
~~807a~~
808

00 $\frac{9m}{4m}$



Candopces variabilis
Leukabad 30. VIII 92

808a



9m



Ecibia polita
Buttenberg 16. IX 87

558

10

899



Nolanea histipes^a
Val d'Arpulle 4. IX 91

560

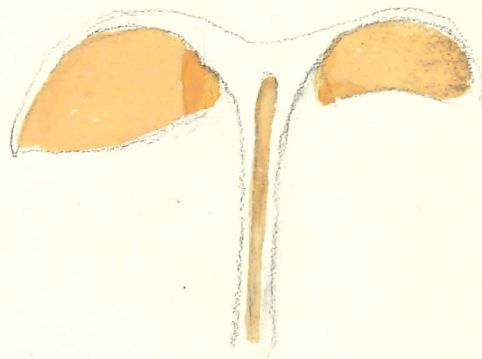
D'après cette note, il ne m'est pas
possible de me prononcer. - Je penche
cependant à croire qu'il s'agit plutôt
d'une *Nolanea* (qui d'ailleurs comme les
Psathyrella ont le stipe creux, soit fistuleux)
que d'un *Melanospore*. Les *Nolanea*
mannosa et *hirsuta* etc. ressemblent
plus ou moins à ceci. -



Nolanea cetrata
Christbühl 25. VII 92



○ ○
○ ○
○ 7/μ

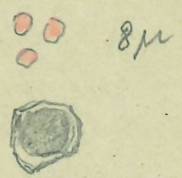


Polonia mammosa

Dokkholz: 8. XI. 85.



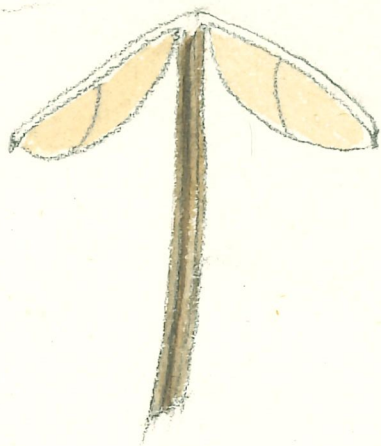
Nolanea pascoa
Vizorie 20. IX 88



Nolanea pascoe
Grankolz " x 93

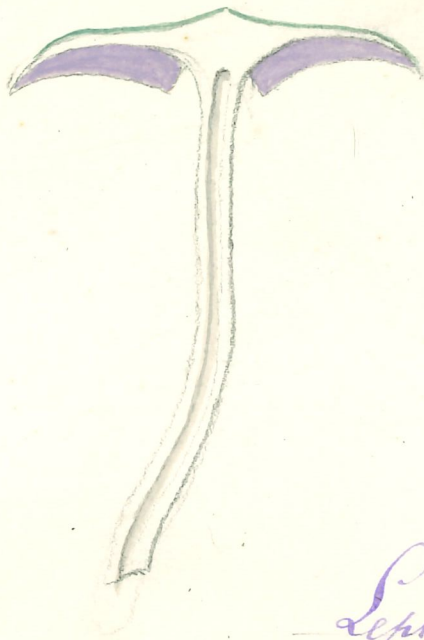


6-8 μ



Leptonia anetina

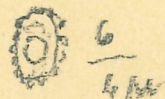
Brungartenwald 20. VI. 89



Leptonia chalybea

Coffman 28. IX. 84

569

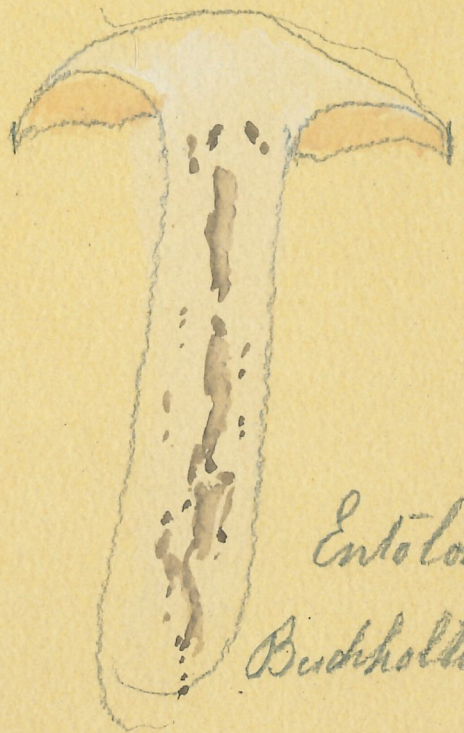


Leptonia refrans

Gevelin 18. IX 97



56h



~~Entoloma~~
 Entoloma sericeum
 Buchholzteberg 12 1x 09
 = Hyporhæa mammosus
 (L.) Schaef.



Entoloma sericeus
Coffrane j 1x 87

= *H. mammosus* (L.) Sacc

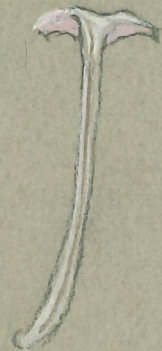
819



Eutoloma sericeum
Garten 22. IX 1.

564

820



Entoloma sericellum

Garden 4. IX. 1.

570

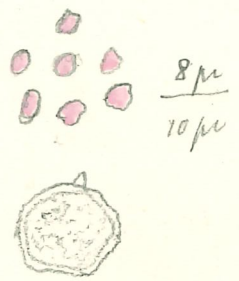


Entoloma clypeatum

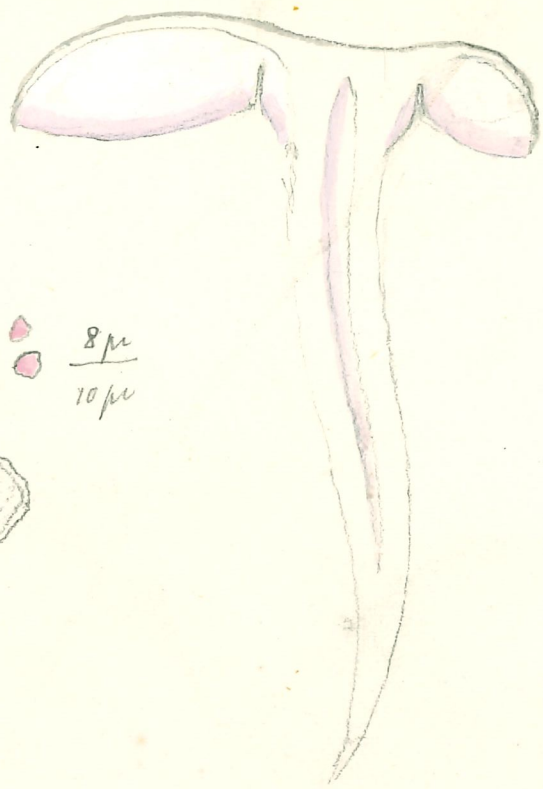
Gerles 18. VIII. 1

572

281



8μ
10μ



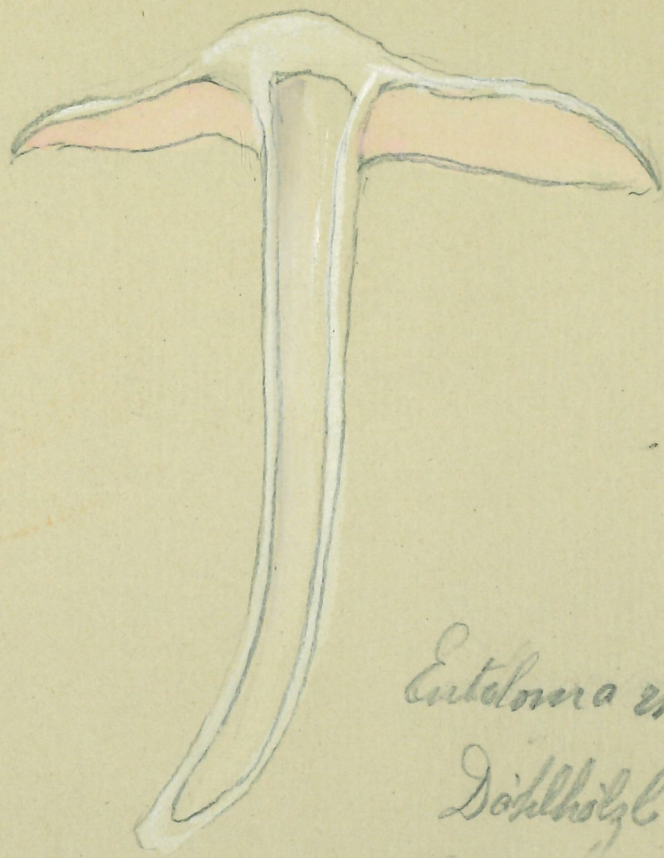
Entoloma rhodopolitum

Dankhöf. 14 x 85

= *Hyphodius hydro-*
gratus



oo $\frac{7,5}{m}$



Entoloma rhodopolium
Döhlholz 9. X 92

824



Entoloma rhodopileus

Briggsmald 13. IX. 87

= *Hyporhodium hydrograminis*
(Bull.) Schaerl

573



7M

= *Hyporhodium*
hydrogrammus
(Bull.) Sacc.

Eutoloma rhodopolium

Levi 15 IX 02

22
1902

826



Clitopilus vilis
Graubholz 14. IX 04

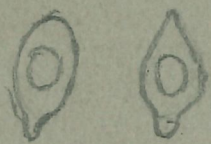
577

827



Clitopilus foeniculoides
Jensberg 9. IX. 84

578



5
10



Jensberg bei Nida 10. IX. 84

Clitopilus truncatus



oo 10µ
5µ



Clitopilus Orcella
Fuly 2. 1X 92

~~H. S. ...~~



579

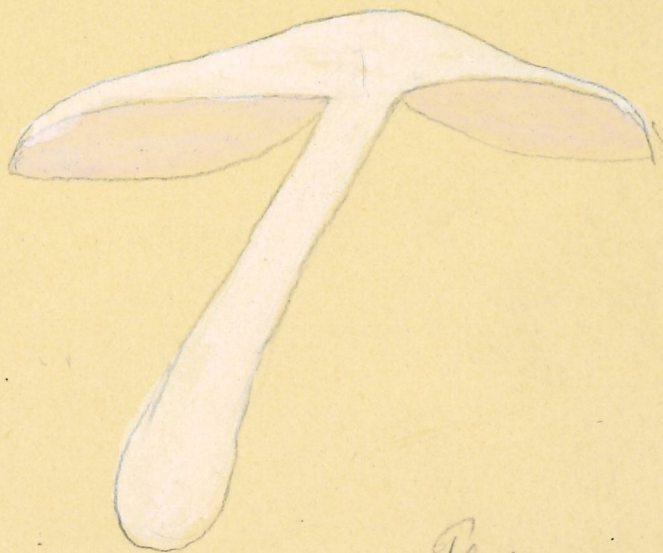


Pleurotus roseo-alba Fr

m. Oltch 227




10m

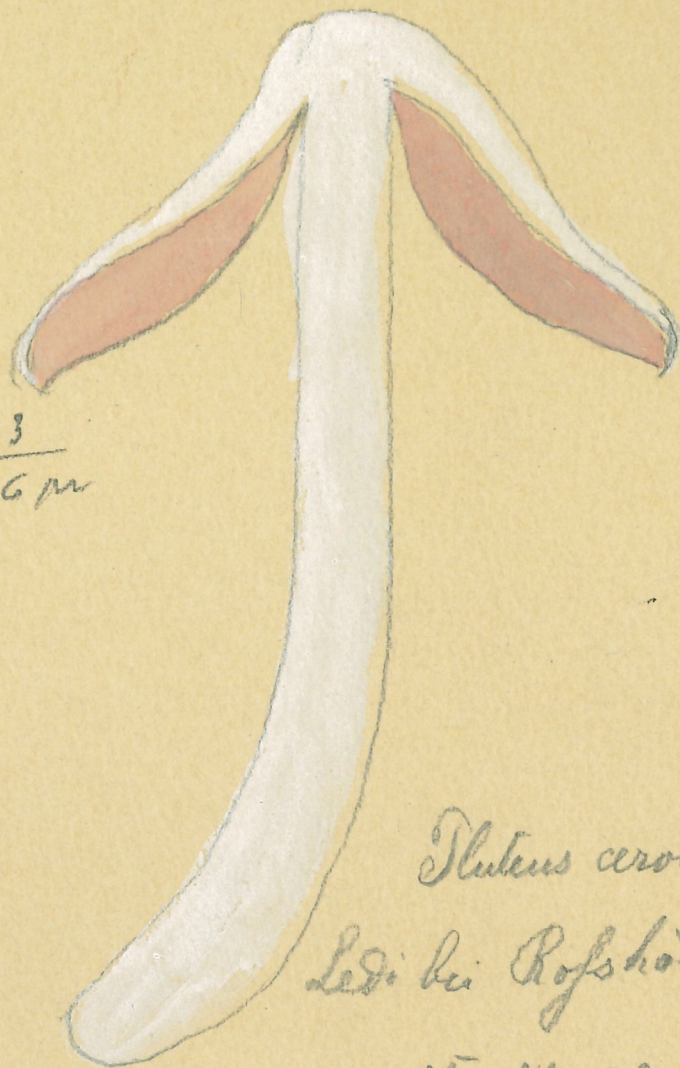


Pluteus cervinus
Bensal 25.8.91

832



 $\frac{3}{6 \mu}$

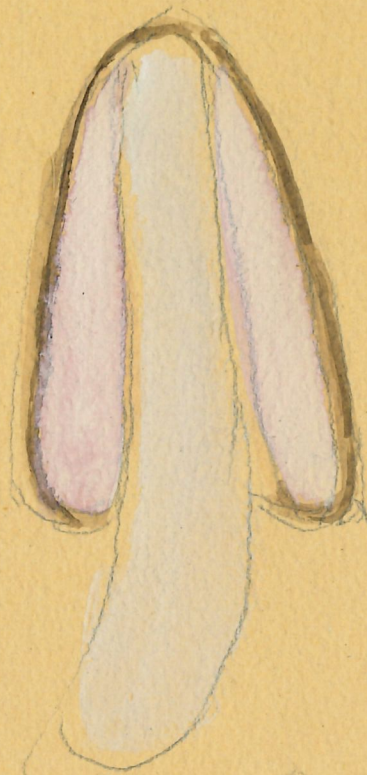


Pluteus cervinus
Ledi bei Rofshöusem

15. IX 02

582

833



20 V. 05

Stictis cervinus

582



10μ

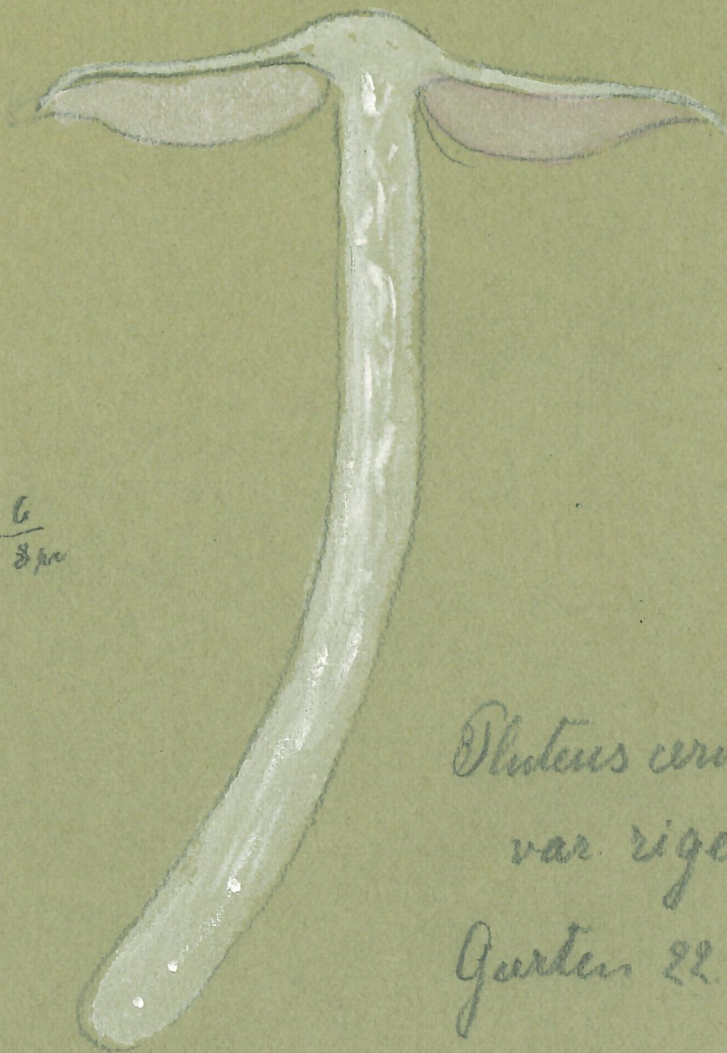


Pluteus cervinus
 var. *rigens* Tuss.
 Turtmann, Thal 7. IX 93

835



$\frac{6}{8 \mu}$



Pluteus cervinus
var. *rigens*

Garden 22. IX 97

582



Pluteus rigens
Garten 16. IX. 04

Polvaria

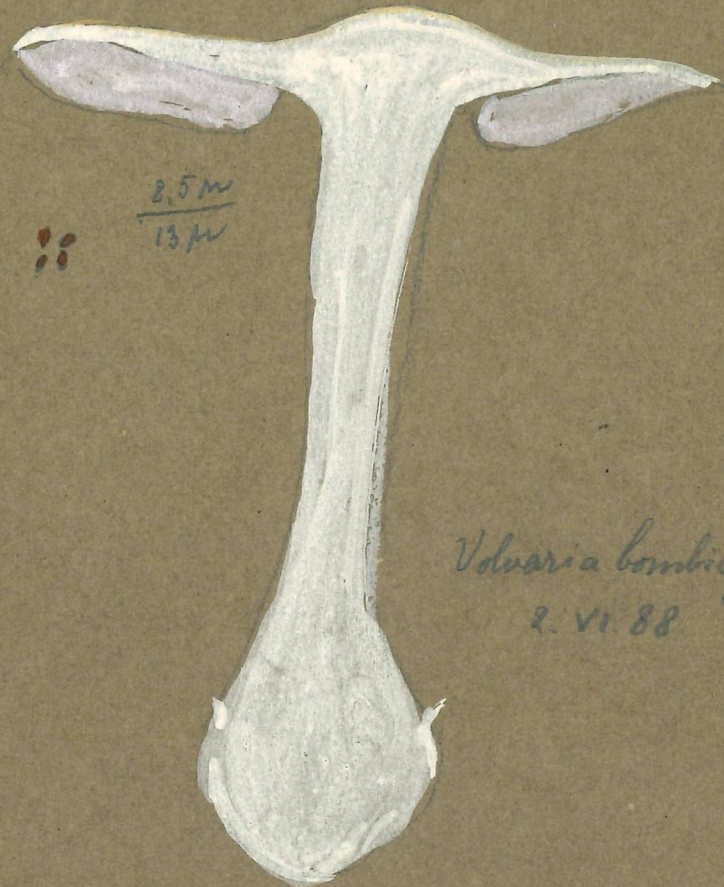


SM
14

Volvaria speciosa
Bon. S. V. 94

837

838



8.5 m
13 m

Volvariia bombycina
2. VI. 88

839



① ② ③ 4.5 m
9



Volvaria bovibovis
Eifelsenthal Aug 89

J. H. Vogt legit.